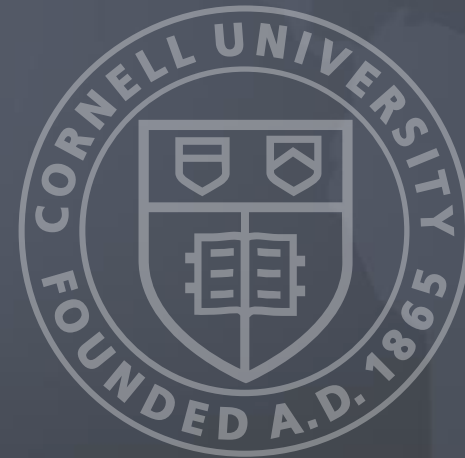


Cornell University and International Collaborations

March 2021

Outline

- Current Process
- Ethical principles
- Collaborations in China
- Dual degrees



Members of the International Council

Wendy Wolford, Chair, OVPIA

Jan Allen, Graduate School

Lorenzo Alvisi, CIS

Linda Barrington, SC Johnson

Victoria Beard, AAP

Marianella Casasola, CHE

Sarosh Kuruvilla, ILR

Patrizia McBride, A&S

Fouad Saleet, Cornell Law

Margaret Smith, CALS

Mickey Stewart, Weill Medicine

Caroline Yancey, CVM

Alan Zehnder, ENG

Global Operations Team

Christine Potter, Associate Vice Provost and Executive Director

- **International HR**
Kristi Shults, Director
- **International Travel Health & Safety**
Chris Cook, Associate Director
- **Administration and International Consulting**
Julie Ellis-Grove, Associate Director
Kenan Omanovic, Specialist

Navigate: Ticket system for International Questions

[Home](#) > [Global Operations](#) > [Navigate](#)

Navigate



Home Domestic International Sign in

Navigate

Helping faculty and staff navigate the operational complexities of off-campus research, instruction, and engagement.

Q Search by keyword(s), or click on a your intended destination below



Domestic

Explore essential operational information to help you plan or conduct your Cornell activities within the United States.



International

Explore essential operational information to help you plan or conduct your Cornell activities outside the United States.

Navigate: Help in Preparing for Off-Campus Work

Faculty Guidelines for International Engagement

[Home](#) > [Global Operations](#) > [Guidelines for Faculty](#) > Engagement with China: FAQ

Engagement with China: FAQ

Research, teaching, and other activities in China have recently come under increased scrutiny, especially with regard to potential intellectual property theft at U.S. universities. In response, various U.S. federal government agencies have promulgated new requirements pertaining to the interactions between U.S. universities and entities in China. Separately, China has introduced new laws and regulations that impact faculty engagement in and with China.

Please note that there are currently [restrictions on travel to China due to the 2019 Novel Coronavirus](#).

Table of Contents:

- [Travel](#)
- [Shipments](#)
- [Collaborations and Services](#)
- [Private Consulting and Teaching Time](#)
- [Additional Resources](#)

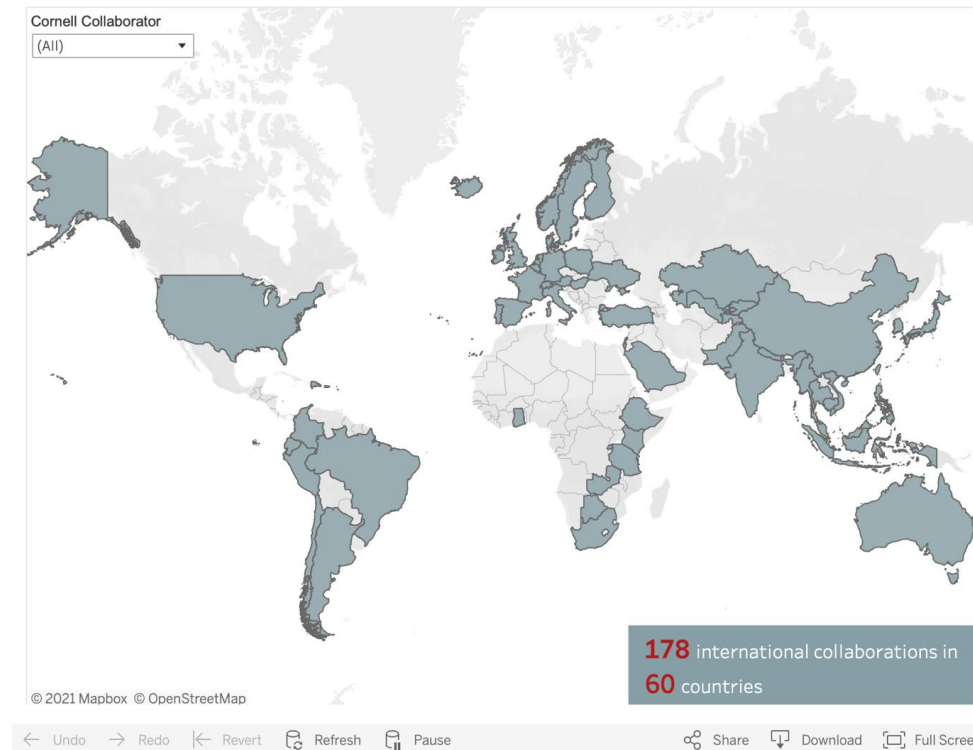
It is important that this increased scrutiny over foreign activities in federally sponsored research does not result in a chilling effect on Cornell's existing and future international collaborations and research. We do not condone threats to academic freedom or discrimination against any person based on ethnicity or national origin. As President Pollack affirmed in a [recent opinion piece](#), Cornell is an international university with a strong commitment to global engagement, an appreciation of intercultural differences, and a spirit of collaboration for mutual benefit. We are a diverse community of students, researchers, and faculty representing over 90 countries.

International Collaborations: Searchable Database

[Home](#) > [Global Operations](#) > [Collaborations and Agreements](#) > [International Collaborations](#)

International Collaborations

Cornell's partnerships with other universities and networks open up global opportunities for students, faculty and staff. Below is a searchable map of active Memoranda of Agreement Cornell currently has in place (please note: expired or agreements currently under negotiation are not represented). For additional information about any of these agreements, please reach out to [Global Operations](#). A sample MOA template [can be viewed here](#) (Cornell login required).



Guidelines on Ethical International Engagement

- ... free and open inquiry and expression; diversity, inclusion, and non-discrimination; justice and human rights; and respect for the natural environment ...
- ... partner with people you know and trust ...
- ... privilege collaborations that promote the social good...
- ... pay attention to the potential and actual unintended consequences of your programs, and work to ensure that your partnerships do no harm...
- ... promote solidarity, respect for diversity, and equity ...
- ... protect and hold dear academic freedom...
- ... consider how your collaboration may open up spaces for expanded speech ...
- ... where concerns arise ... about violations of academic freedom or of other core Cornell values, carefully consider the response that is most appropriate and useful ...

Cornell Connections to China

2,246 students from China study at Cornell
(main and tech campuses)

200+ scholars from China teach and conduct
research on our main campus

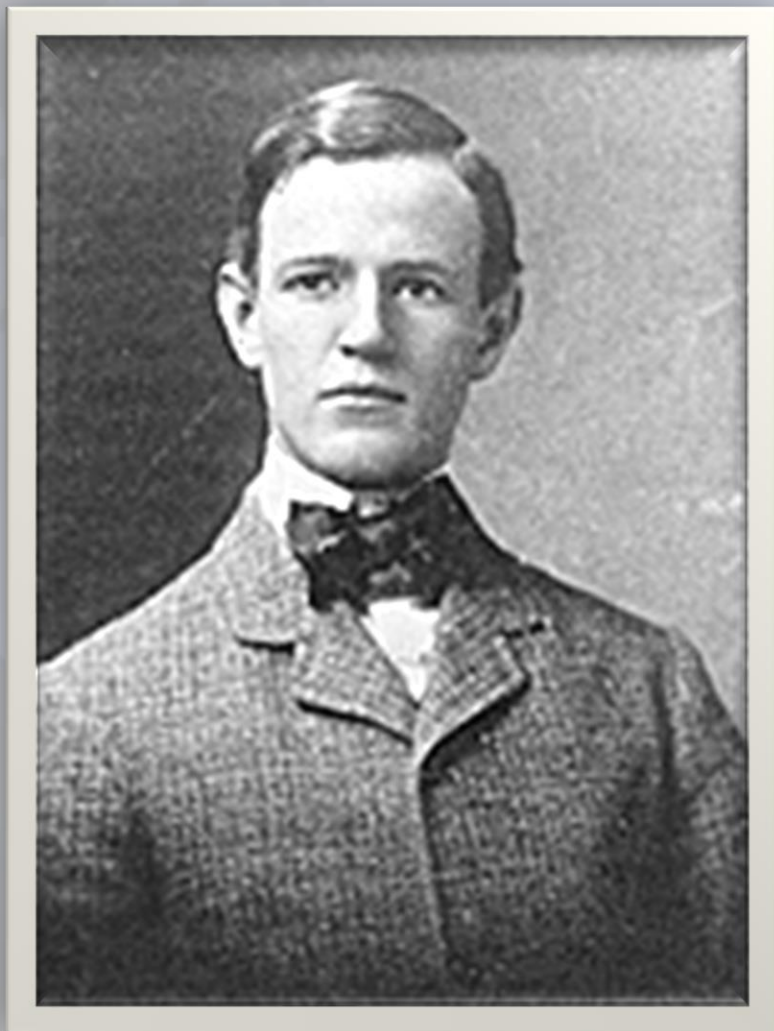
23 current Cornell University collaborations
with Chinese institutions

In 1897, Cornell admitted its first Chinese student, Alfred Sao-Ke Sze, who later became China's ambassador to the U.S.

施肇基

第一位中国学生
历史上任期最长的
驻美使节





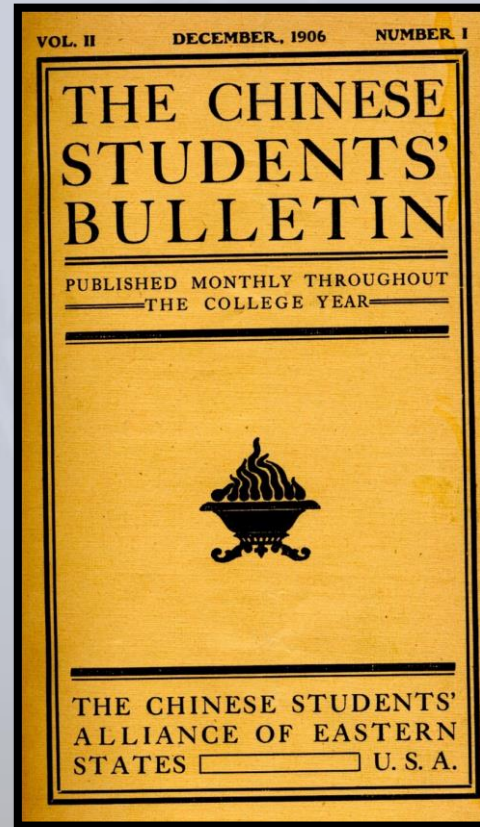
Willard Dickerman Straight Class of 1901
U.S. Consul in Shenyang (1906)



Willard Dickerman Straight Hall

Chinese New Literature Movement started at Cornell

康奈尔是中国新文学运动的摇篮



任鸿隽、陈衡哲、胡适



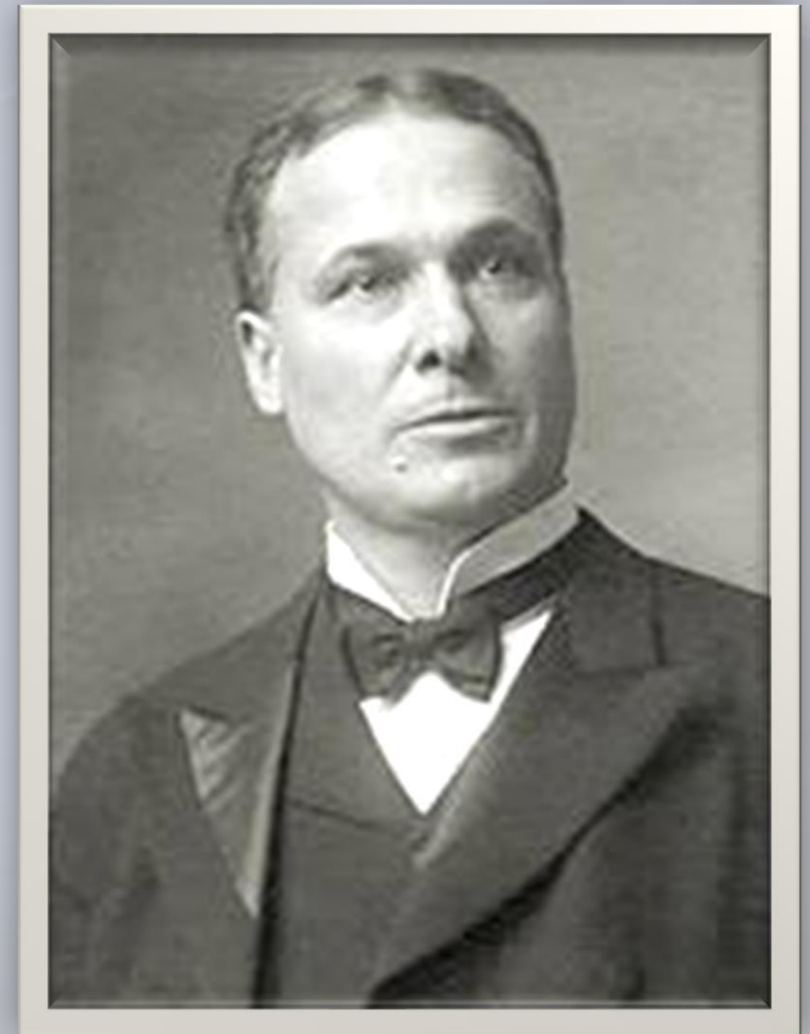
Mao Yisheng

茅以升

Leading Chinese bridge engineer

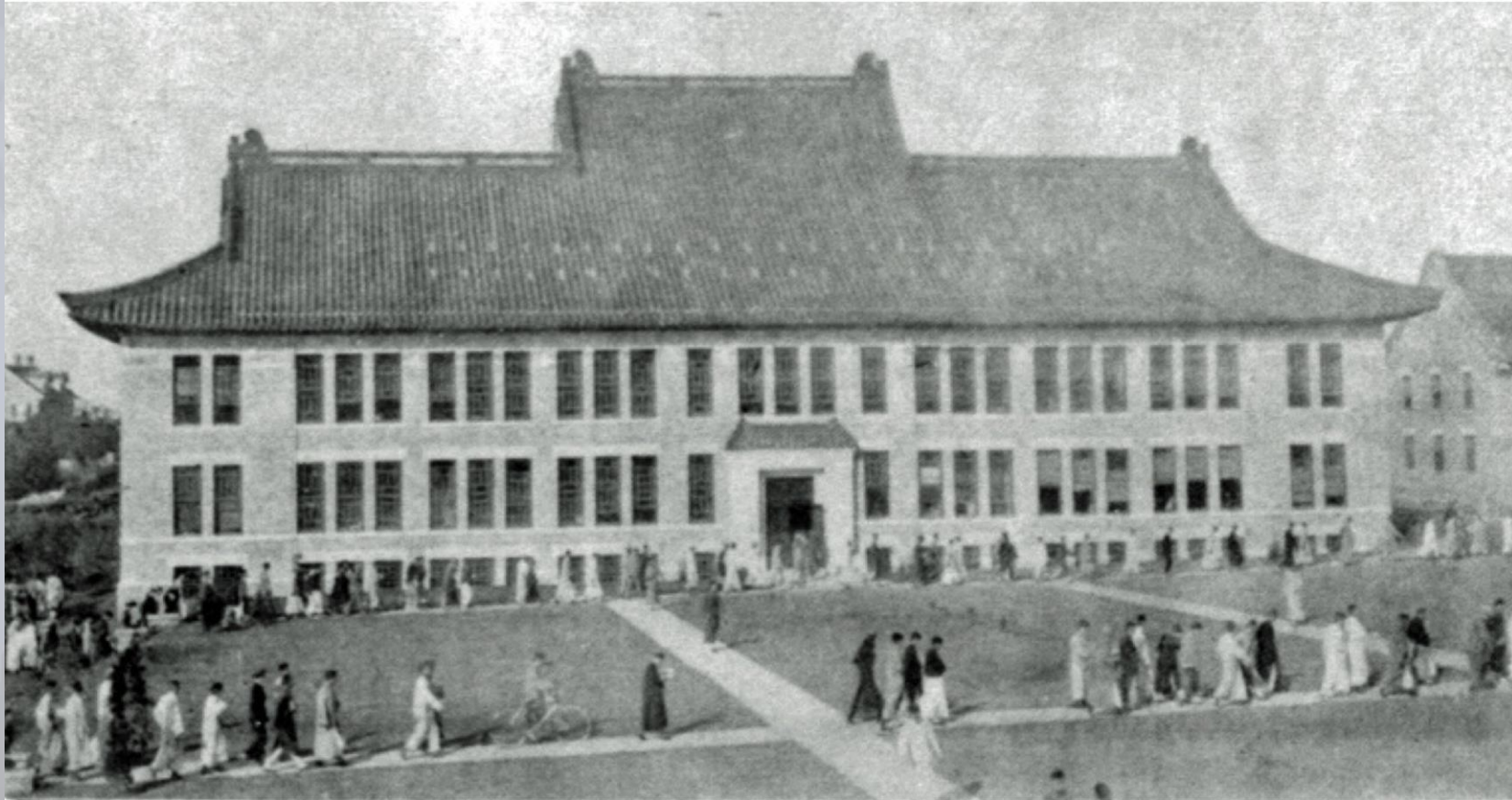
中国桥梁专家

**President Jacob G. Schuman
welcomed Chinese delegation. He
later served as the Minister of the
United States to China (1921–25)**



The Cornell-Nanking Story

The First International Technical Cooperation Program in Agriculture



Our peers
have a much
larger
institutional
presence in
China than
Cornell

Peer universities in China

- Columbia Global Centers Beijing
- University of Chicago Center in Beijing and U Chicago campus in Hong Kong
- Harvard Center Shanghai
- Stanford Center at Peking University
- Princeton China Center at Tsinghua University
- Yale Center Beijing
- Penn Wharton China Center, Beijing
- NYU Shanghai
- Duke University Kunshan campus
- Cornell China Center (2018)

Cornell China Center: New Center Space

Moving to a larger space in the China Central Place in Beijing's central business district.

- chinacenter.cornell.edu



Cornell Asia-Pacific Studies Program

College of Arts and Sciences with Peking University

Major with one semester in Beijing and optional semester in Washington DC
= cultural immersion and leadership training.



Dual Degrees: **Process for approvals**

- Information template: IRP
- Department and College approvals
- Graduate Committee (if graduate degree)
- Committee on Academic Programs and Policy (Senate)
- External review (SUNY/NYSED) as appropriate
- Board of Trustees

PROPOSAL: Make the process more transparent; add the International Council as an additional layer of review and approval, with veto authority