

# Working Group C - Subgroup 3 Governance

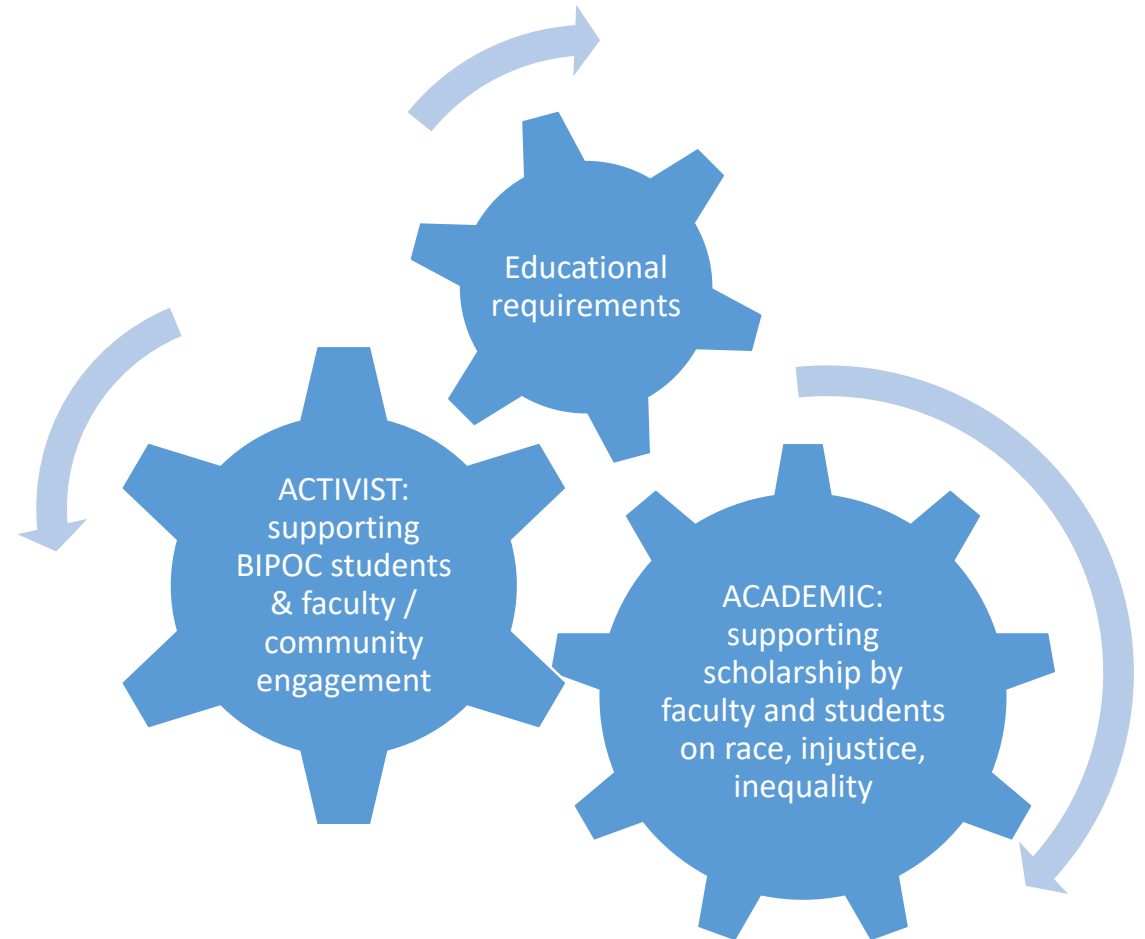
Meeting 2 Talking Points  
December 3

# UPDATES from all Working Groups

The Center will be a visible, centrally located gathering space that has an **academic** and an **activist** orientation.

- **academic**: supporting scholarship by faculty and students on racism, injustice and inequity locally and globally through various programs (thematic/post-doc/grantmaking)
- **activist/advocacy**: supporting BIPOC student engagement and career/work-life support, BIPOC faculty support, engagement with local BIPOC community. A focus on holding the community accountable

Workings Group on 'educational requirements' for students ~~and faculty~~ **are leaning towards locating the governance of this requirement at the 'Center'**. Content will include a focus on historical and structural basis of racism, injustice, inequity and on learning the skills to combat everyday racist behaviors



additions made since last week underlined

# The Governance Puzzle

**Piece 1:** Who sets the agenda?

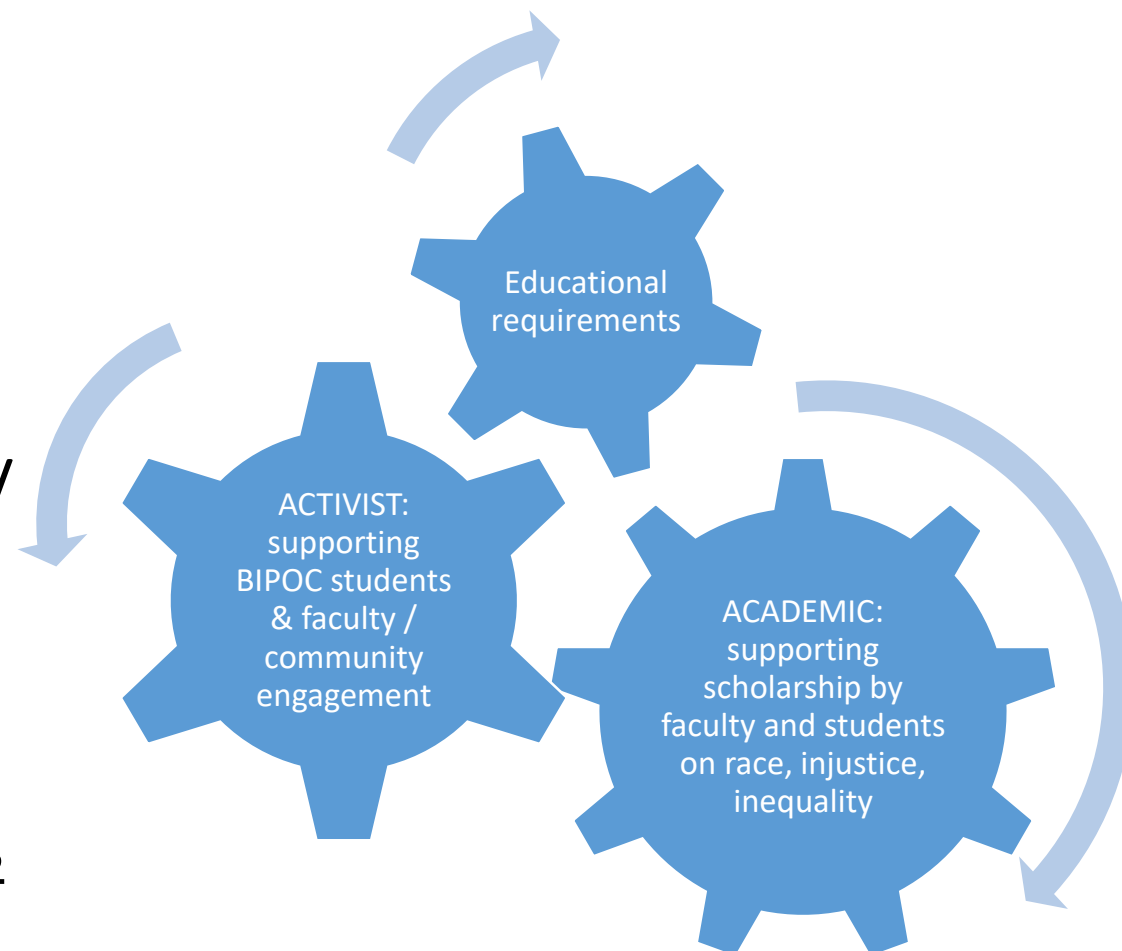
Governing Council + Executive

**Piece 2:** What is the structure?

**Piece 3:** What is the relationship of structure to impacted units / colleges / university?

Representatives from affiliated units split equally between faculty/staff and BIPOC students

**Piece 4:** How is it funded?



# Recap, Who Sets the Agenda for the Center?

1. What should a democratic, transparent, accountable system of governance for a university wide entity look like? (Advisory boards, representation, composition, leadership structure). Add responsiveness to evolving needs? And build in regular assessments.

**Governing Council (GC)** to advise the **executive**, which will report to the **Provost**.

GC to include:

- *Student representatives* from each college'S BIPOC focused student org / ~~elected assemblies~~ / residential units (25 students)
- *Faculty representatives* from each College, Grad School, DoF (11 faculty)
- ~~*Staff representatives* from each central unit (8 staff). Remove this category?~~

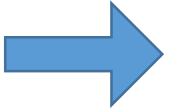
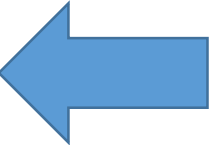
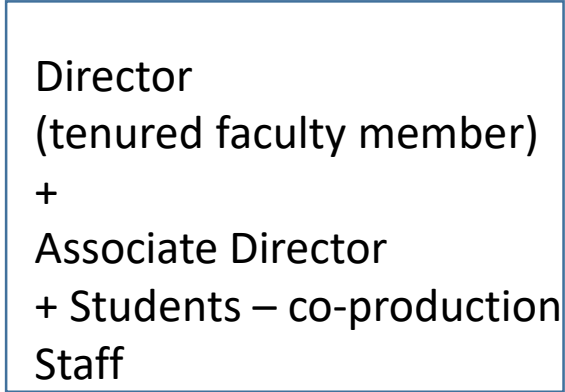
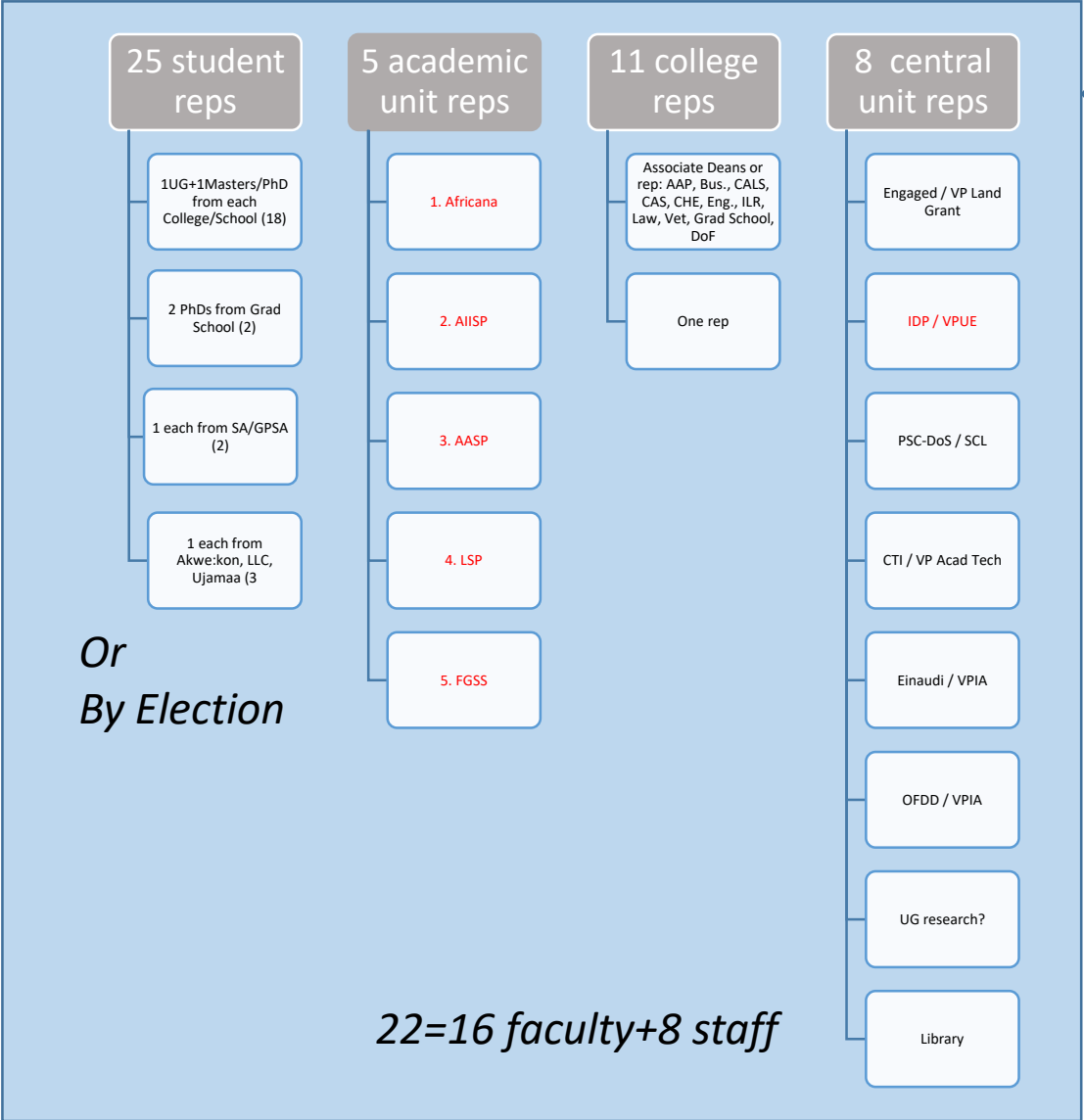
2. How would the governance system be inclusive of existing programs and units who work in areas of overlap?

- Include *representatives* from FIVE programs in GC

3. ADD: REPS FROM CENTER TO SIT ON OTHER ADVSORY BAORDS AND STRUCTURES

# 51 Member Governing Council (meets at least once a semester?)

# Executive



Provost  
(VPAA?)

Director sits in  
VPUE/Associate Deans Committee  
VPAA / OFDD ADVISORY BOARD

## How Might the 'Center' be Funded?

- Build an Endowment (via compelling arguments and originality)
- Provost Office (CCSS is funded through the Research Office)  
Student Campus Life ? Library?
- External Funding  
The Andrew W. Mellon Foundation. Example: the Rural Humanities Program is administered by the Society for the Humanities.  
The Cornell Center for Social Science offers faculty grant writing support.  
Kellogg Foundation.