

Announcements

Charlie Van Loan
Dean of Faculty

Faculty-Elected Trustee (2018-22)

Melissa Hines, Chemistry

Nominations & Elections Committee (N&E) (2018-2021)

Shorna Allred, Natural Resources

Sara Warner, Performing & Media Arts

University Faculty Committee (UFC) (2018-2021)

Mariana Wolfner, Molecular Biology and Genetics (*non-senator*)

Anthony Hay, Microbiology (*senator*)

Senate-At-Large Senators (2018-2021)

Robert Karpman, Biomedical Engineering (*non-tenure*)

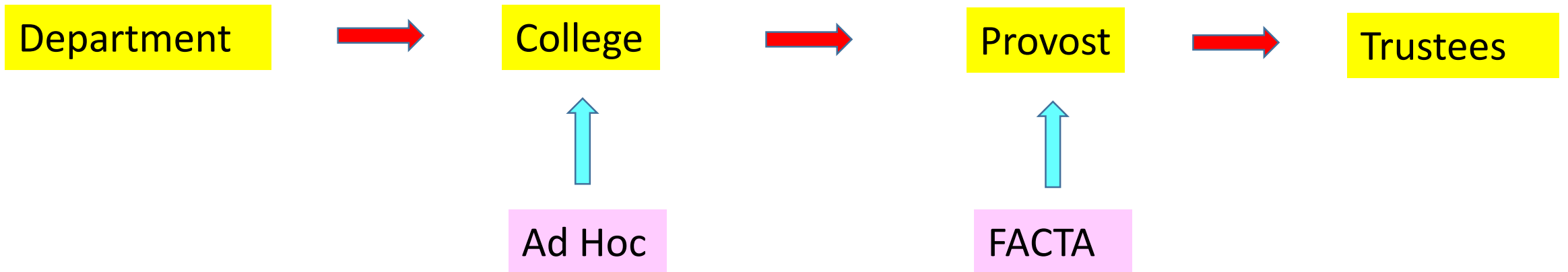
Scott Coonrod, Biomedical Sciences (*tenure*)

Chelsea Specht, Plant Biology (*tenure*)

**2018
ELECTION
RESULTS**

Faculty Advisory Committee on Tenure Appointments (FACTA)

Our legislation requires annual FACTA-to-Senate Reports. Here is how FACTA fits into the overall promotion-with-tenure process:



Recent FACTA Activities

2016-2017

58

Total Number of (asst prof) Tenure Cases

11

Number going to 'Full FACTA'

5 led to a positive recommendation

6 led to a negative or "split" recommendation

2017-2018

45

Total Number of (asst prof) Tenure Cases

5

Number going to 'Full FACTA'

2 led to a positive recommendation

3 led to a negative or "split" recommendation

Process

15 on committee, all colleges

1. Each dossier has about 4 readers

2. If anybody has a concern, the dossier is read by the full committee.

Next Year's "Big Thing": How We Schedule the Week

Topics:

1. The Slots: 8:00, 9:05, etc
2. The Lengths: 50 vs 75 vs ?
3. The MTWRF Distribution
4. The 4:30-7:30 free zone
5. Classroom usage
6. Room assignment algorithms

This has not been looked at in decades. Can we come up with something better?

Consensual Relationship Policy End Game

From President Pollack's Charge to the CRP Committee

I request that the committee transmit the proposed policy to my office no later than May 1, 2018 along with the reactions from the Faculty Senate and each of the assemblies.

Results = Votes + Commentary

	CRP-A	CRP-B	Neither	Total	Eligible
Student Assembly	13	4	5	22	31
Graduate and Professional Student Association	13	27	1	41	85
Employee Assembly	4	11	0	15	28
University Assembly	4	1	2	7	20
Faculty Senate	30	48	22	100	103
CRP Committee	12.3	5.7	0	18	18

Questions or Comments?