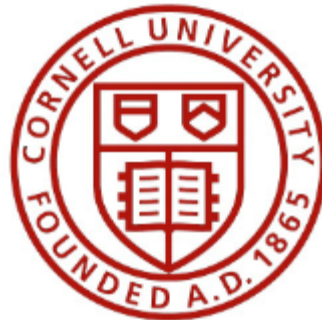


# UNIVERSITY FACULTY SENATE MEETING

SEPTEMBER 10, 2014



# FACULTY SENATE ELECTION

- BRUCE LEWENSTEIN, SPEAKER 2014-2015

# AGENDA

- **Call to Order – Speaker Bruce Lewenstein (2 min)**
- **Introduction & Report on Faculty Matters - Dean of University Faculty Joe Burns (9 min)**
- **\*Report from Nominations & Elections – Mike Fontaine, Associate Dean of Faculty (3 min)**
- **\*Approval of Minutes from 3/12 and 4/9/14 – Speaker (1 min)**
- **Report on Student Health (Mental Health, Gannett Clinic, Sexual Assault Policy) – Susan Murphy – Vice President for Student & Academic Services (30 min)**
- **Report of Working Group on Carbon Neutrality – Robert Bland and Michael Hoffman, Co-chairs (30 min)**
- **General Good and Welfare (15 min)**

**\*CONSENT ITEMS**

# FACULTY SENATE

- Legislative body of University faculty
- By-laws: “questions of educational policy...establishment of degrees”
- By tradition: items of campus-wide concern, but...
- University-wide, representing departments, but...
- Conduit for information flow in two directions
- Debate: encourage discussion of multi-sides
- Limit to 2 min/speaker until all have spoken. Senators get preference

# REPORT ON FACULTY MATTERS

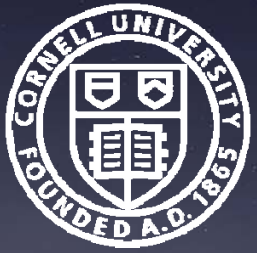
1. Presidential Search
2. FACTA results: in '12-'13, 46/47  
in '13-'14 36/36
3. Faculty Soup now being served,  
in Regent Lounge, Statler, 11:30-1:30
4. "International Programs: What? Who?"  
Statler Aud, 4:30-6, Friday, 9/19/14

# COMMITTEE ACTIVITIES

- Educational Policy: Final exam/grade schedules
- Financial Policy: Oversight of “new” budget model, salaries
- Academic Freedom & Professional Status:  
Title of Research Professor
- Program Review reactivated
- New Online Development Group being formed
- Acceleration Working Group continues

# **CONSENT VOTE BY SENATORS**

- **APPROVAL OF MINUTES FROM MARCH 12, 2014 AND APRIL 9, 2014 FACULTY SENATE MEETING**
- **REPORT FROM NOMINATIONS AND ELECTIONS COMMITTEE**



# Student Health and Well-Being

Faculty Senate  
September 10, 2014





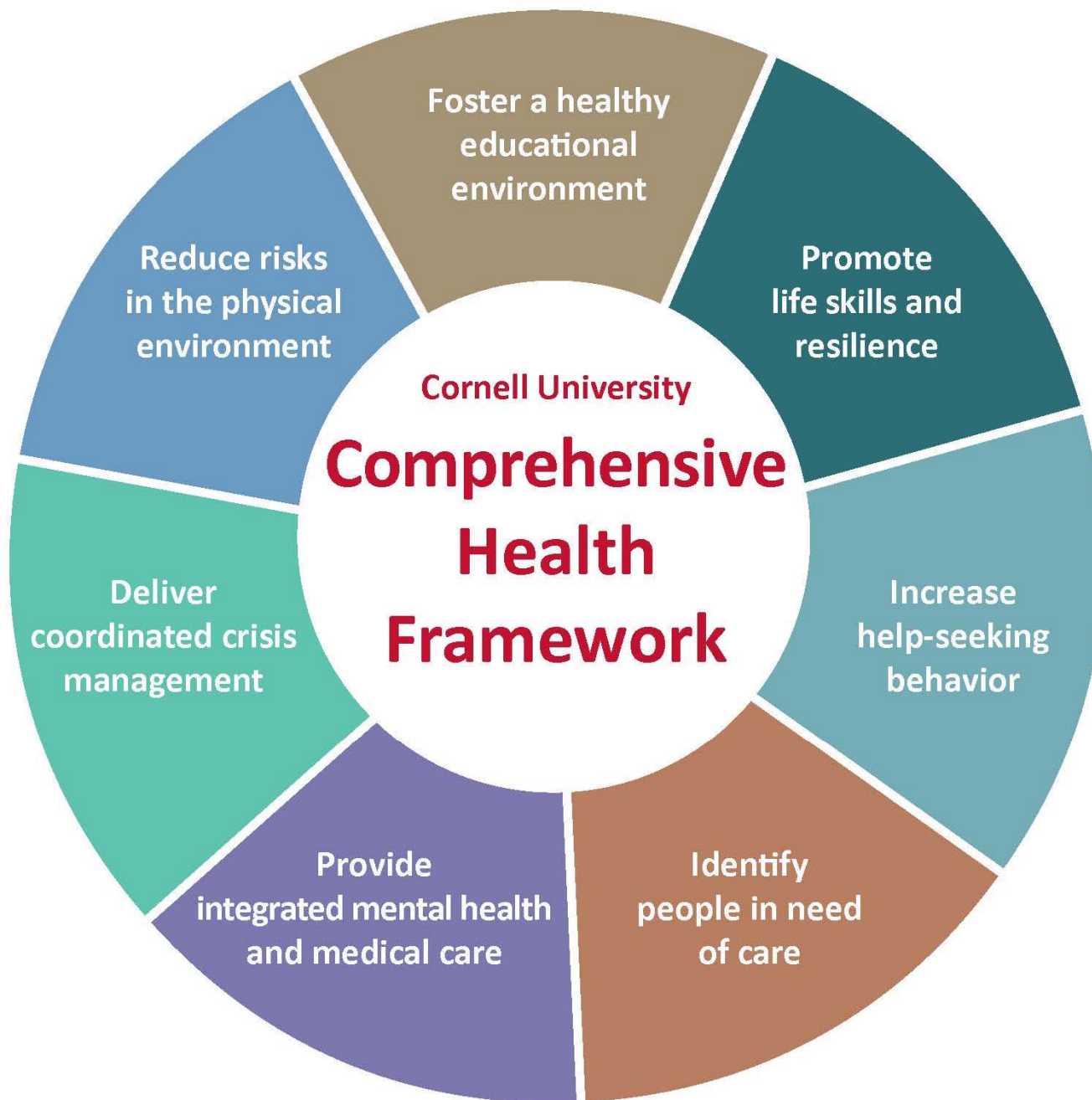
## Cornell Strategic Plan

Objective within Educational Excellence:

“Promote the health and well-being of students (undergraduate, graduate, and professional) as a foundation for academic and life success.”

## Preventing/Responding to Health & Safety Threats

For many years, Cornell has utilized a **comprehensive public health approach** to deal with the **prevention** of and **response** to various health and safety threats impacting our community.



# Campus Health Initiatives

<b>Alcohol &amp; Other Drugs</b>	<b>Mental Health</b>	<b>Sexual Violence</b>	<b>Hazing</b>
<b>Executive Committee on Campus Climate, Health and Safety</b>			
<b>President's Council on AOD</b>	<b>Council on Mental Health &amp; Welfare</b>	<b>Council on Sexual Violence Prevention</b>	<b>Council on Hazing Prevention</b>

## Mental Health Data

PULSE 2013 (n = 6,190)

In the past 12 months, 38% of Cornell undergraduates were unable to function academically (e.g., missing classes, unable to study or complete homework) for at least one week due to depression, anxiety, or stress.

## Mental Health Strategies

- Notice and Respond & Friend2Friend
  - More than half of all faculty have participated
- Resilience building
  - Staying Balanced program with Engineering 1050
  - School of Hotel Administration session for first-year students
- Integrated Medical & Mental Health
  - Depression screening
  - Design of new facility

Firefox | Cornell Daily Sun | cornellsun.com/blog/2014/09/02/cornell-sees-increase-in-medical-transport-over-orientation-week/ | Google

INDEPENDENT SINCE 1880

# The Cornell Daily Sun

NEWS | OPINION | SPORTS | ARTS | SCIENCE | DINING | MULTIMEDIA | BLOGS

You are here: Home » News » Cornell Sees Increase in Medical Transports Over Orientation Week

## Cornell Sees Increase in Medical Transports Over Orientation Week

SEPTEMBER 2, 2014 1:06 AM | 1 COMMENT

By ASHLEY CHU

With an increase in high-risk drinking among students — particularly in off-campus locations such as Collegetown — University officials say they are concerned about student alcohol consumption during Orientation Week and the weeks that follow.



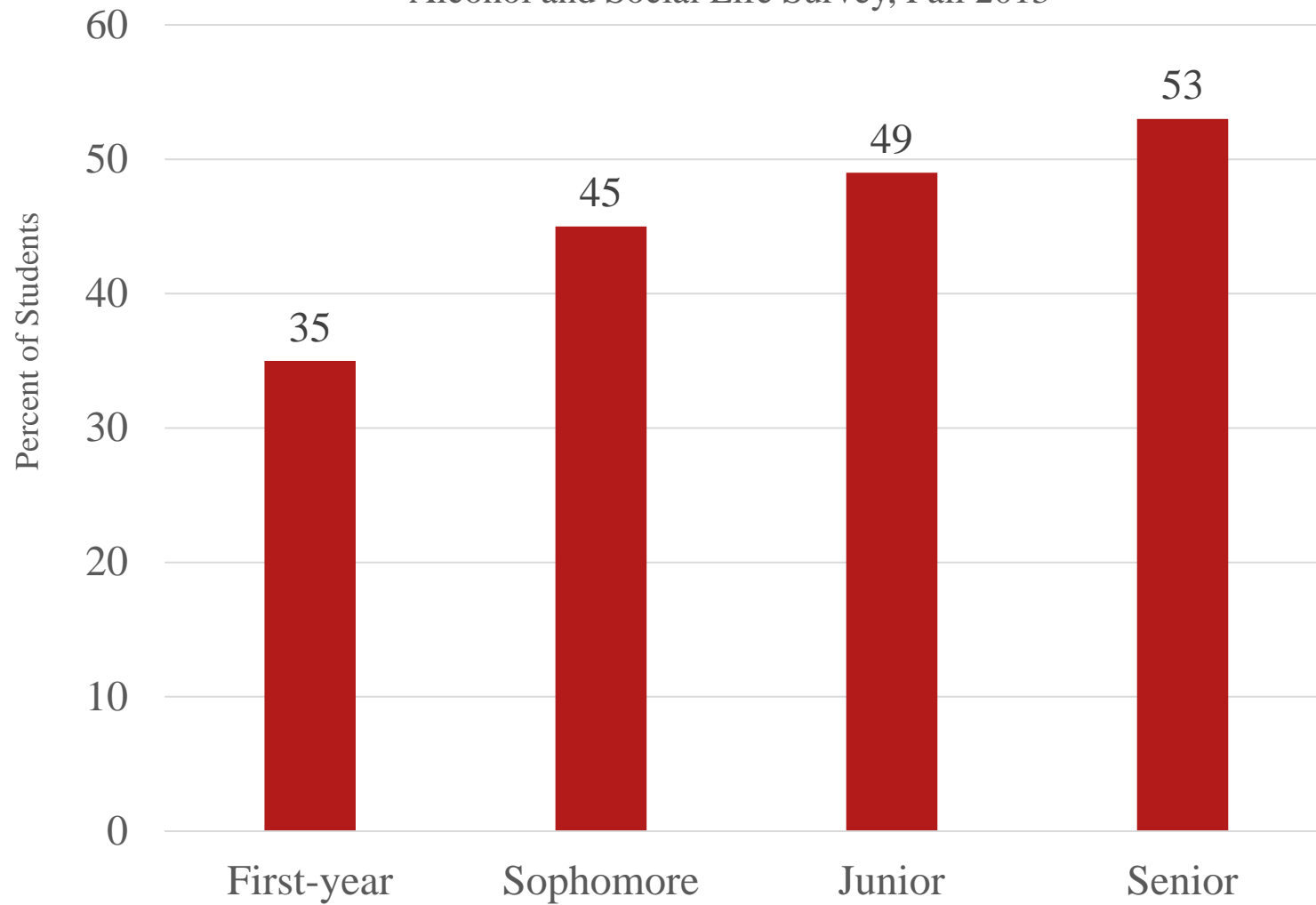
SEARCH CORNELLSUN.COM

CORNELL SUN VIDEOS

President Skorton ALS Ice Bucket Challenge

10:48 PM 9/3/2014

**High-Risk Drinking**  
**(5+ drinks for males, 4+ females)**  
Alcohol and Social Life Survey, Fall 2013





# Percent of undergraduates experiencing harm from alcohol/drugs during past year

\*Core Alcohol and Drug Survey

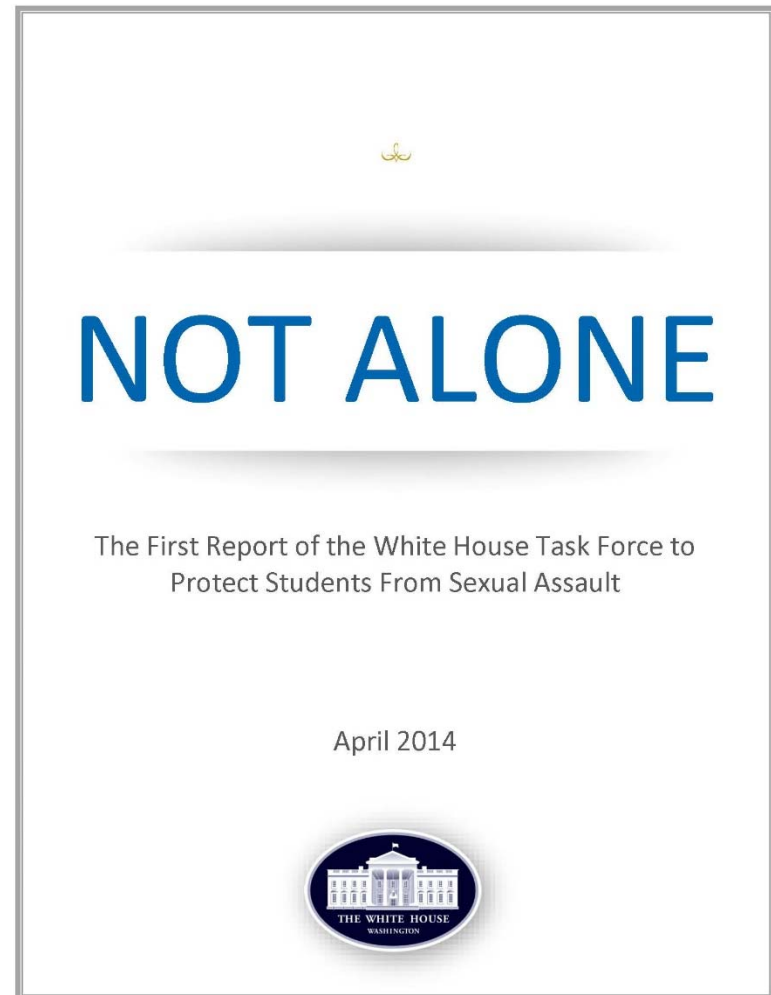
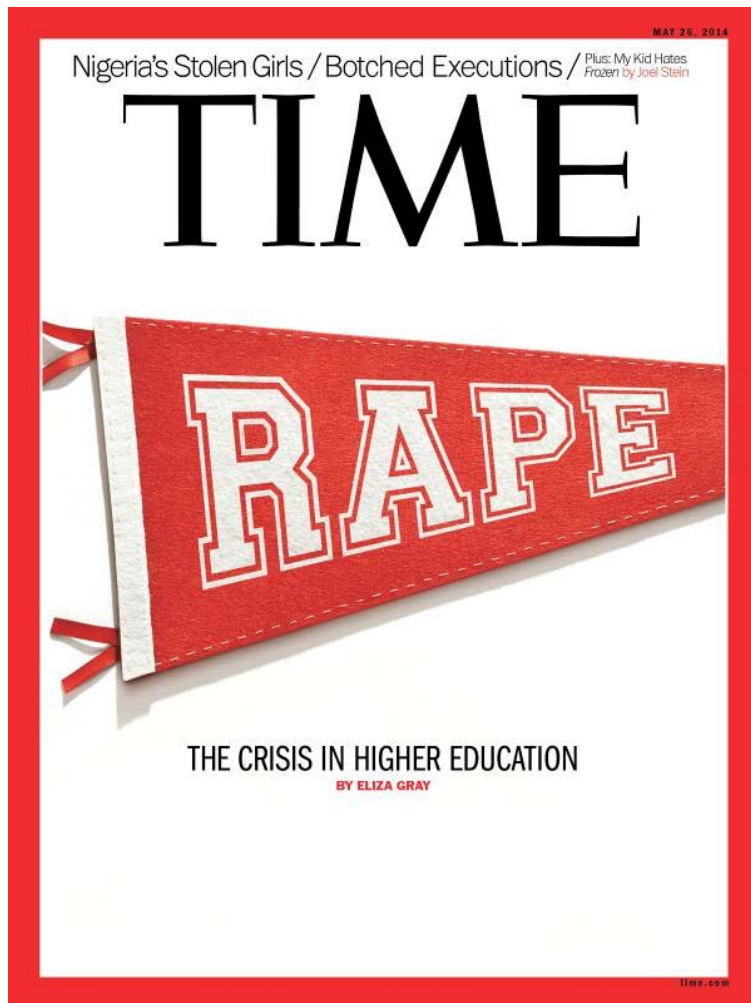
	<b>Cornell Fall 2013</b>	<b>Cornell Fall 2012</b>	<b>Nation* 2011-13</b>
Memory loss	28	30	33
Missed class	16	18	25
Poor academic performance	7	8	19

## AOD Strategies

- Screen for alcohol problems in medical visits
- Correct misperceived norms
- Coordinate enforcement with IPD
- Cayuga's Watchers
- Good Samaritan Policy



# Sexual Violence



# Nonconsensual Sexual Experiences in Past 12 Months

Alcohol & Social Life Survey, fall 2012, n = 2,875

	<b>Female</b>	<b>Male</b>
Sexual penetration or attempted penetration	3.4%	.07%
Sexually touched	7.7%	2.3%

## Sexual Violence Prevention/Response Strategies

- Council on Sexual Violence Prevention
- Bystander education (*Speak About It*)
- Respect@Cornell
- Policy 6.4

## Percent of undergraduates reporting experiences of hazing

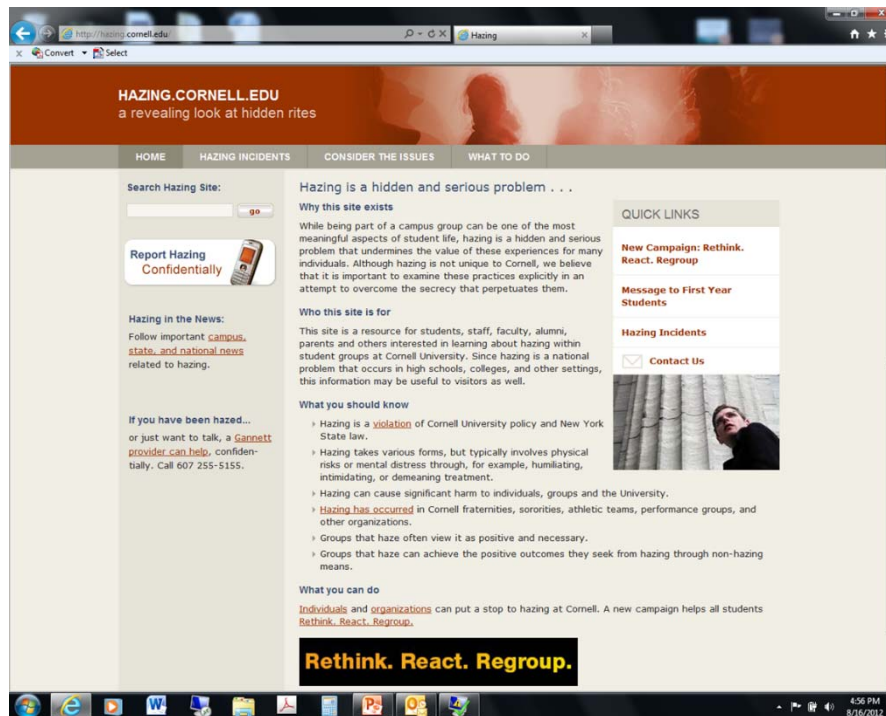
Cornell MASCOT Survey: Membership Activities in Student Clubs, Organizations and Teams (2013)

	<b>All students (n=2,332)</b>	<b>Social fraternity or sorority (n=694)</b>	<b>Varsity athletics (n=213)</b>	<b>Other student groups* (n=2,159)</b>
Cornell 2013	39	48	47	31
National Study	55	73	74	----

\*Ex. Performing arts groups, academic clubs, service organizations

# Hazing Prevention Strategies

- Changes to Greek new member process
- Council on Hazing Prevention



**82%**

of Cornell students believe:

**it's never ok to humiliate or intimidate new members.**



... not in a group, team, or organization. It's never ok.

**Find out more: Definitions. Reporting. Help.**

**www.hazing.cornell.edu**

This message is brought to you by the Office of the Dean of Students, the Office of Fraternity and Sorority Affairs and Independent Living, the Department of Athletics and Physical Education, Gannett Health Services, Institutional Research and Planning, Residential Programs, and the Cornell Police.

The data point,\* may be personally surprising, affirming, or disturbing. It is intended to challenge commonly held misperceptions and generate conversation about actual characteristics of the Cornell community.

\* Perceptions of Undergraduate Life & Student Experiences (PULSE) Survey, Spring, 2013 (N=5,805, 45% response rate)





# UHS Facility Renovation Southeast corner at Ho Plaza





# UHS Facility Renovation East entrance off Ho Plaza



# UHS Facility Renovation

## South view





# UHS Facility Renovation Northwest view



# GENERAL GOOD AND WELFARE

## 10 SEPTEMBER 2014

